

# Intrepid M Quickstart Guide

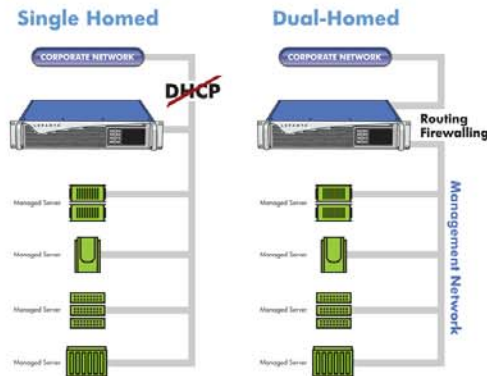
1



## Intrepid Setup

1. Unpack box and identify all contents.
2. Verify that box contents include: CD, TWO standard power cables (black) and the Intrepid appliance.

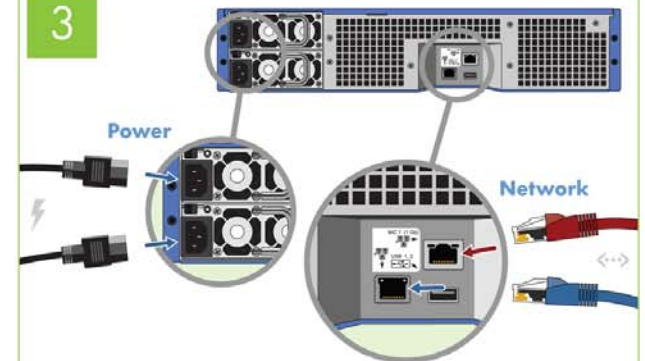
2



## Preparation:

Determine whether your environment is a "Single Homed" or "Dual-Homed" system.

3



## Connect Cabling

1. Connect both power cables
2. Connect Ethernet cable to the **managed network** (top right port)
3. Connect Ethernet cable to the **corporate network** (lower port)

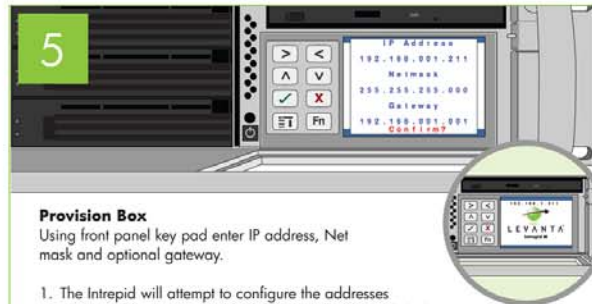
4



## Power-on unit

1. Using latch under right handle, open faceplate door to reveal inside front panel.
2. Locate the power-on button inside the front panel (left of keypad) and press to power up the appliance.

5

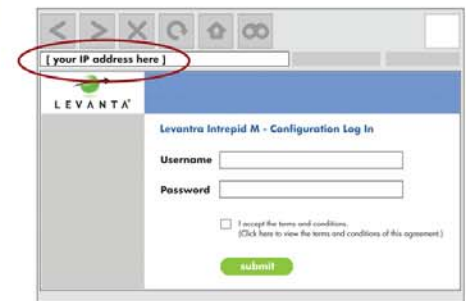


## Provision Box

Using front panel key pad enter IP address, Net mask and optional gateway.

1. The Intrepid will attempt to configure the addresses automatically, and ask user if they opt to stop the dhcp client.
2. If the dhcpclient succeeds in configuring the interface, the parameters will now be visible in the LCD, where the user must then confirm. The user has 10 seconds to respond. A counter is visible in the lower portion of the LCD. To confirm, and continue to boot, the user either allows the timer to expire, or presses the check mark on the key pad, and proceed to step 4.
3. If in step 2 above, the user can select not to accept the previously identified settings by pressing the arrow or 'X' on the keypad. Using the arrow keys, the user can navigate around the screen and set the appropriate values for the parameters by pressing the check mark twice.
4. When the system finally boots the LCD will contain the final IP address.

6



## Configure Appliance

1. Bring up Admin UI using a browser.
2. Input IP address from STEP 5 in browser URL.
3. Enter User name and password.
4. Accept end-user license agreement.